



“More than 120 companies in over 80 countries rely on the Sciencesoft Reservoir Simulation Suite”

Analysing the future



**RESERVOIR
SIMULATION
SUITE**



RESERVOIR
SIMULATION
SUITE

Analysing the future

The Sciencsoft Reservoir Simulation Suite of products helps reservoir engineers analyse results from reservoir simulators by rapidly producing 2D and 3D images, which can then be further analysed using tools available within the software. The Reservoir Simulation Suite consists of four products: **S3GRAF**, **S3GRAF-3D**, **S3GRAF-HPG** and **S3connect**.

S3GRAF



Simplify the way you work

S3GRAF is the leading reservoir simulation post-processing software package which is in use by more than 1500 engineers across 120 companies worldwide today.

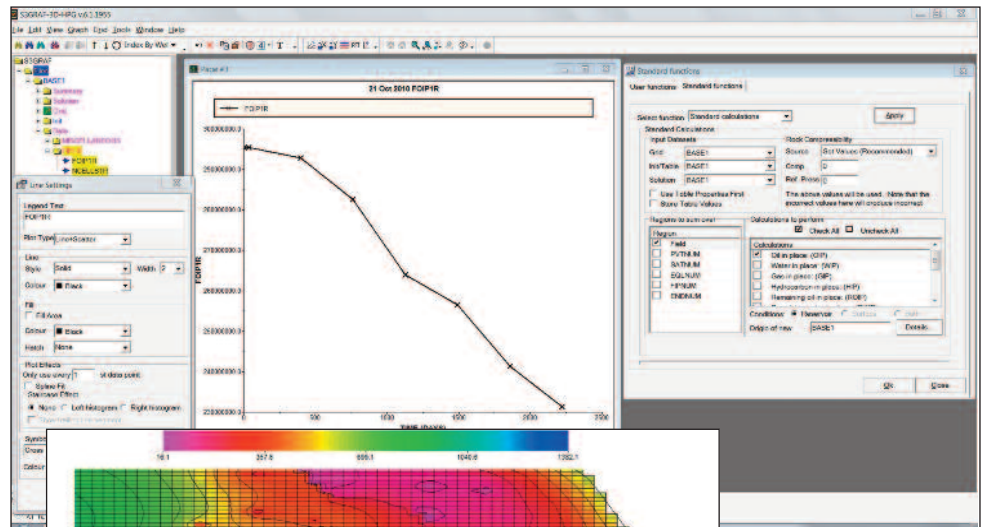
It supports the widest range of simulators in the market including Eclipse, CMG, VIP, Nexus, Streamline (FrontSim and 3DSL), UTCHEM and many more.

It is powerful and easy-to-use, enabling the creation of detailed plots for multiple wells upon the click of a mouse. All plots can then be automatically exported to a Microsoft Office package to quickly and easily create reports.

Benefits

- Multiple simulator support – allows standardisation
- Automatic report creation, saving you time
- Seamless integration with other **S3GRAF** modules into one complete package
- Batch processing ability, enabling creation of a series of plots in seconds

S3GRAF also contains powerful analytical functionality, allowing the reservoir engineer to quickly reach critical decision-making points. New properties can be easily and rapidly created from initial input data. Run-time monitoring is also available. Grids and corresponding restart data can be viewed in 2D.

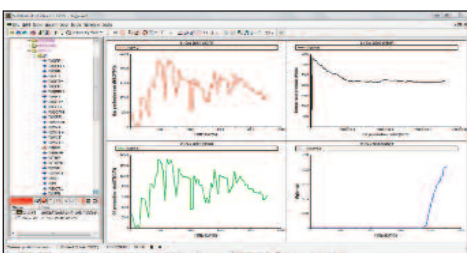


Standard calculations

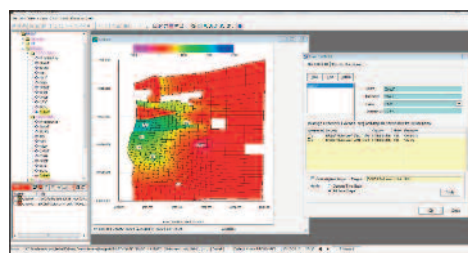
2D contour

Key Features include:

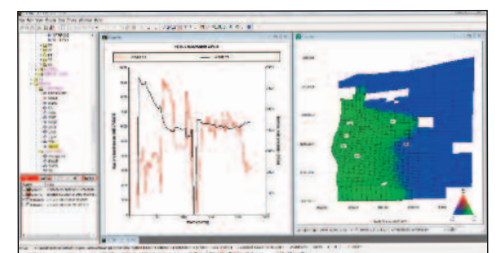
- Fast data loading and plotting via intuitive drag-and-drop
- Ability to compare different simulator data in the same window
- Supports 32-bit and 64-bit versions of Windows (XP, Vista and Win7)
- User-defined properties via Derived Quantities



Multiple line plots in a window



Derived quantity with 2D grid



Line plot and linked 2D ternary grid

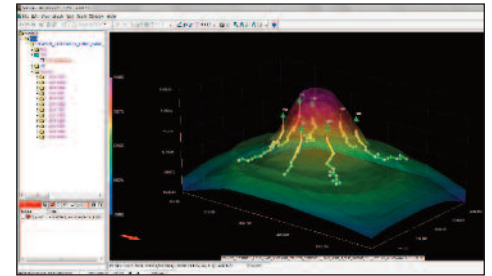
S3GRAF-3D is a powerful add-on module for **S3GRAF** which enables 3D visualisation and analysis of reservoir simulator models. **S3GRAF-3D** has many powerful and advanced 3D features to enable reservoir engineers to quickly view and analyse 3D grids. It is fully integrated with **S3GRAF** and so allows grids to be linked to line plots. Multiple grids can be viewed on-screen simultaneously for different simulator data types.

Benefits

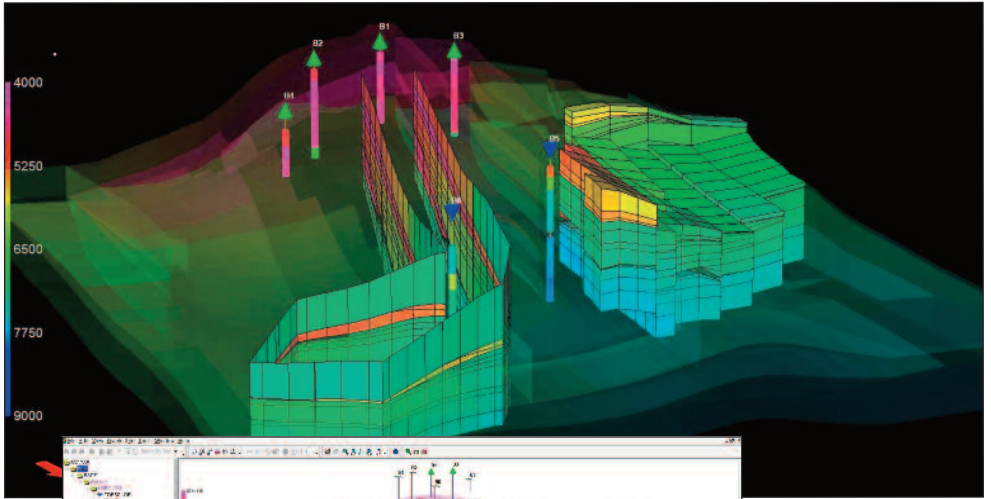
- Enhances productivity via ease of use
- Multiple simulator support – allows standardisation
- Advanced 3D visualisation enables faster access to model
- Multiple grids on screen for faster analysis
- Analysis and calculation capabilities for user-defined grid regions

Key Features include:

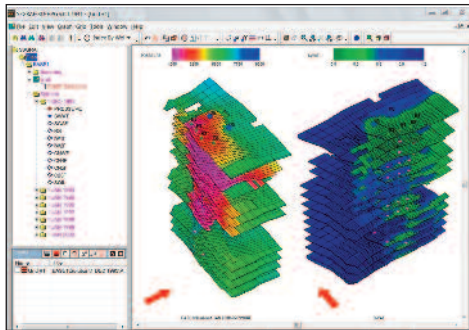
- Multiple grids in separate views can be linked
- Seamless integration with **S3GRAF**
- Volumetric calculations on grid regions
- Exportable user-defined properties and grid regions



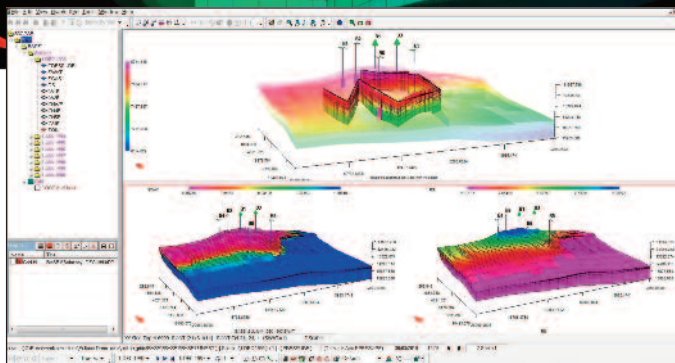
Well tracks view



Polyline and polygon



Clone view, exploded



Multiple grids on-screen

S3GRAF-HPG is an add-on module which offers major productivity improvements for reservoir engineers. It enables multi-million cell grids and associated restart data files (which can be several GBytes in size) to be loaded in seconds, allowing the engineer to begin work immediately. This can be especially critical for remotely located users accessing a server many kilometres away.

Key Features & Benefits

- Up to 100x faster than traditional data loading methods
- Mega grids in milliseconds and GBytes of restart data in seconds
- Banishes the data loading bottleneck
- Major boost to productivity, giving outstanding time-saving benefits

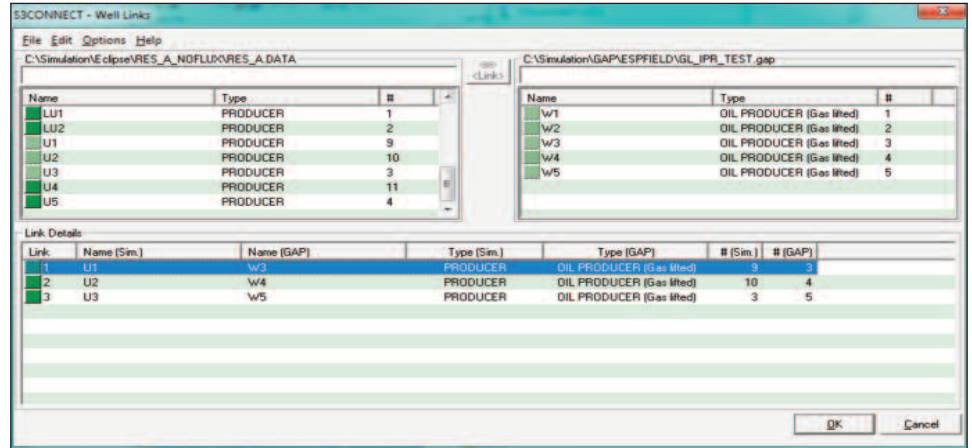
Grid Size	Restart File Size	Typical Load Time	S3GRAF-HPG Load Time	Time Saved Loading One Model	Weekly Time Saved
100,000	250 MB	1 min	1 sec	1 min	20 mins
250,000	500 MB	2 min	2 sec	2 min	40 mins
500,000	1 GB	5 min	5 sec	5 min	1h 40 mins
1,000,000	2 GB	10 min	7 sec	10 min	3h 20 mins
2,000,000	4 GB	15 min	10 sec	15 min	5 hours

Time saved using S3GRAF-HPG

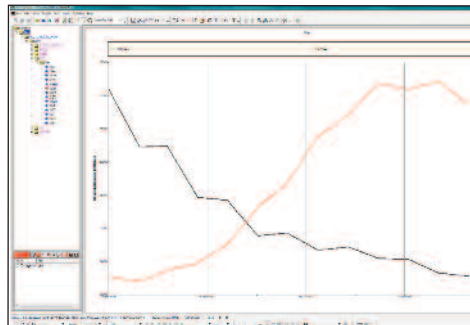
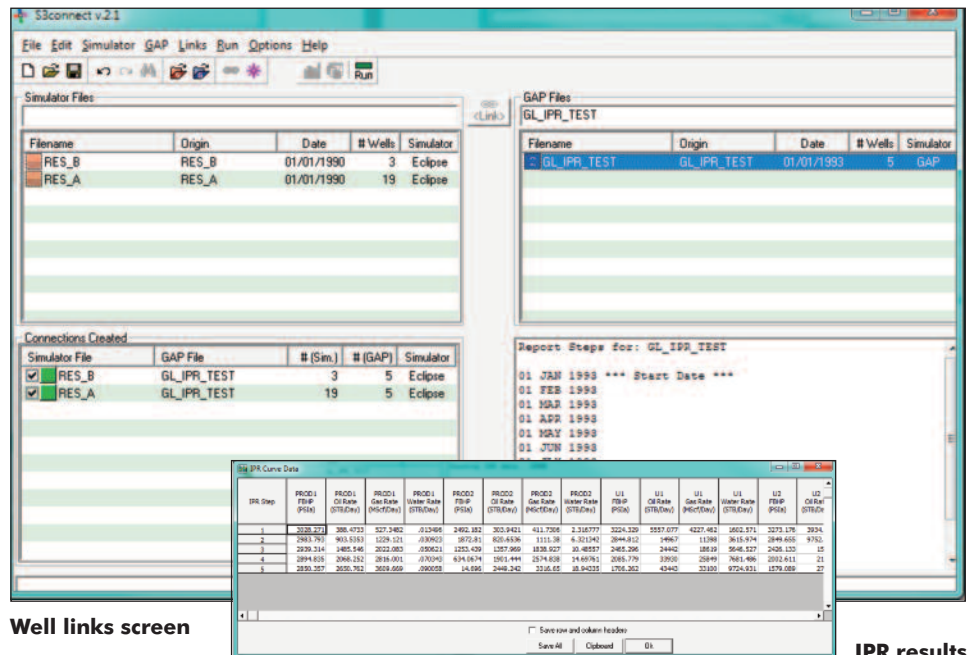
S3connect couples surface network models in the GAP software to reservoir simulation models in Eclipse, FrontSim and VIP. S3connect runs on Windows (XP, Vista and Windows 7), and can launch the reservoir simulator on Windows or Unix/Linux.

Key Features & Benefits

- Provides more accurate coupling of reservoir simulation to surface networks, thus improving optimisation
- Connects multiple reservoir models with a single **S3connect** licence, saving resources
- Provides cost-effectiveness by coupling to standard Eclipse, making efficient use of existing simulator licences
- Supports multiple simulators
- Automatic IPR curve generation
- Integrates with **S3GRAF** for easy viewing of results



Main screen showing schedule data



GAP separator output results from S3connect viewed in S3GRAF

Well links screen

IPR results



Your Nearest Dealer is:

For further information on all Sciencesoft products, contact us now.

Moorpark House 11 Orton Place Glasgow G51 2HF Scotland United Kingdom
 tel. +44 (0)141 445 0330 fax. +44 (0)141 445 2041
 e-mail. sales@sciencesoft.com website. www.sciencesoft.com

